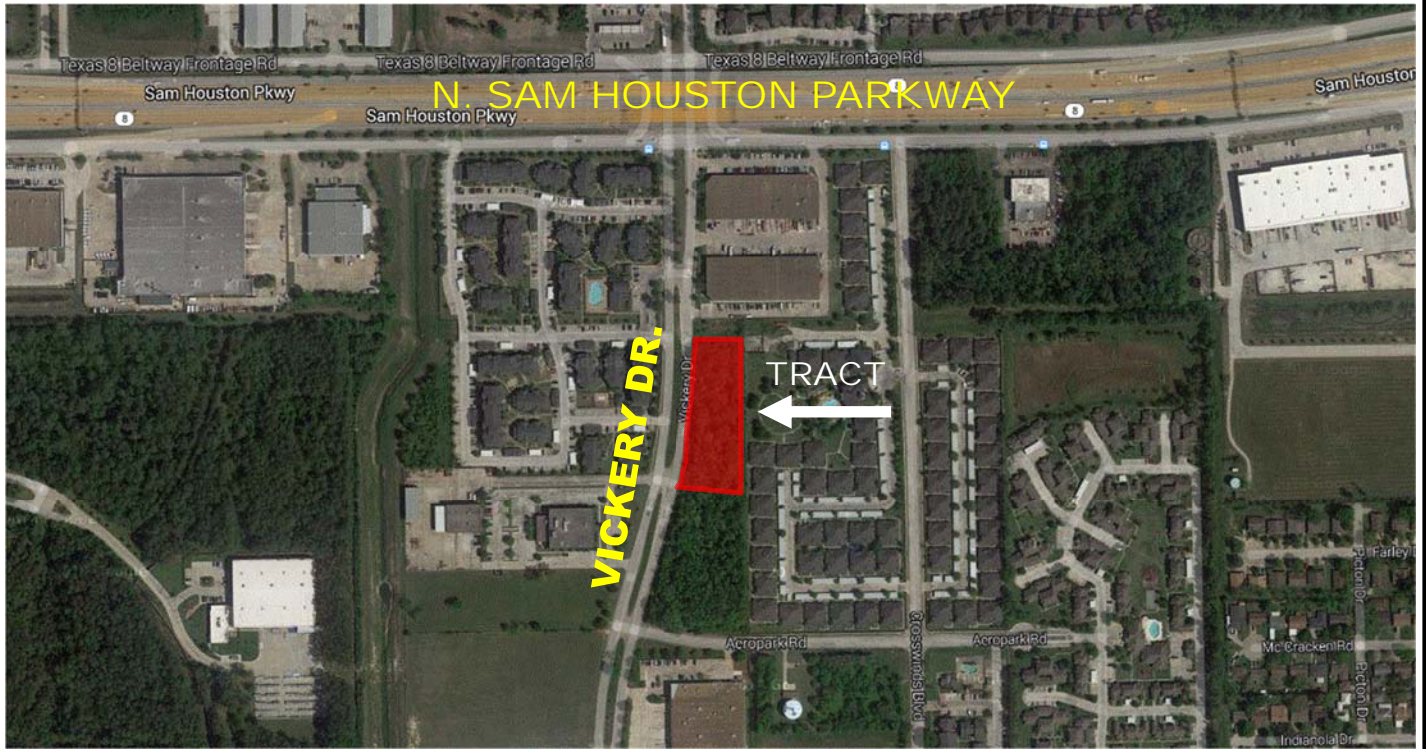


FOR SALE

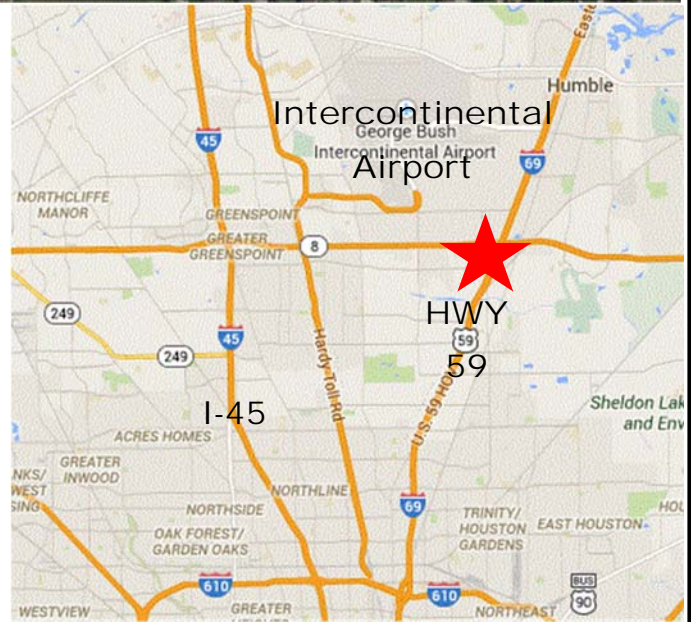
1.685 ACRES

VICKERY DR. & N SAM HOUSTON PKWY HOUSTON, TX



1.685 Acre Unimproved Land Tract

- Location:** Vickery Dr. - 488 feet south of N. Sam Houston Parkway
- Price:** \$367,000.00 (\$5.00 psf)
- Terms:** Cash or terms acceptable to owner
- Frontage:** Vickery - 471 feet
- Floodplain:** Not in floodplain
- Utilities:** All available to property line



Evtex Companies
5100 Westheimer | Ste. 155
Houston, TX 77056 | 713-621-3999

Contact Broker For More Information:

| | |
|---------------|-------------------|
| Joe Evans | Janae Evans, SIOR |
| 281-955-5535 | 713-621-3999 |
| Joe@evtex.com | Janae@evtex.com |

The information herein has been obtained from sources believed reliable. While we do not doubt its accuracy, we have not verified it and make no guarantee, warranty or representation about it. It is your responsibility to independently confirm its accuracy and completeness. Any projections, opinion, assumptions or estimates used are for example only and do not represent the current future performance of the property. The value of this transaction to you depends on tax and other factors which should be evaluated by your tax, financial, and legal advisors. You and your advisors should conduct a thorough independent investigation of this property to determine the suitability of the property for your needs.