



Evtex Companies
1806 Harbor Dive
Rockport, TX 78382

Contact Broker For More Information:

Janae Evans

361-790-6030

Janae@evtex.com

20.2 Acres
Hwy 35 By Pass Frontage
Hwy 35 By Pass Between
Pearl and W. Market St.
Rockport, Texas



Evtex Companies
 1806 Harbor Drive
 Rockport, TX 78382

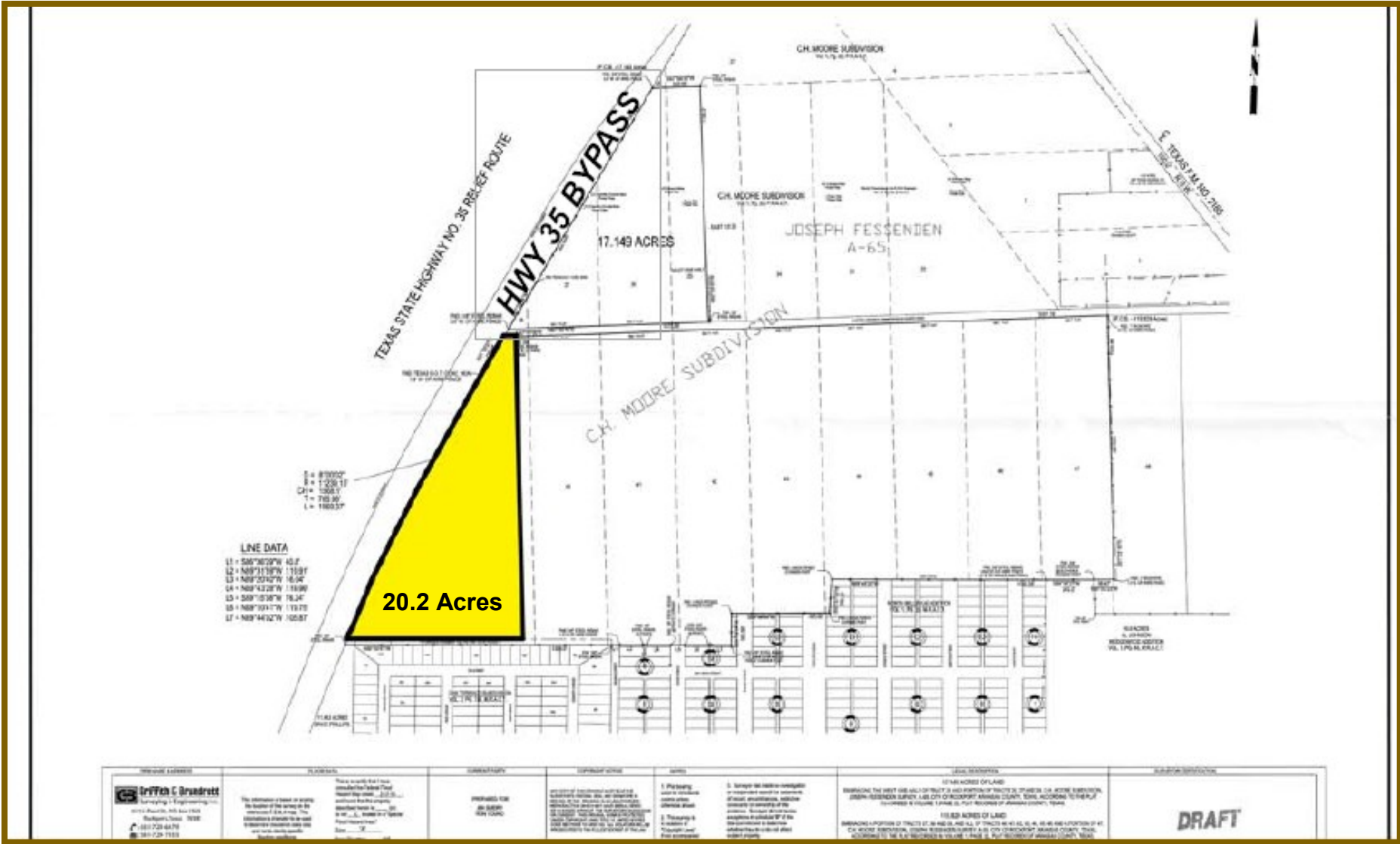
Contact Broker For More Information:

Janae Evans

361-790-6030

Janae@evtex.com

20.2 Acres
Hwy 35 By Pass Frontage
Hwy 35 By Pass Between
Pearl and W. Market St.
Rockport, Texas



Evtex Companies
 1806 Harbor Drive
 Rockport, TX 78382

Contact Broker For More Information:

Janae Evans

361-790-6030

Janae@evtex.com

20.2 Acres
Hwy 35 By Pass Frontage
Hwy 35 By Pass Between
Pearl and W. Market St.
Rockport, Texas

Hwy 35 By Pass

Between Pearl and W. Market St. - Rockport, Texas

A Premier Development Tract

- Acres:** 20.2 acres
- Location:** Hwy 35 By Pass between Pearl and W. Market St., Rockport, Texas
- Legal Description:** Portions of Tracts 37, 38, 39 (Approximately 20.2 acres) located on Hwy 35 By Pass, See survey and aerial.
- County:** Aransas County
- Terrain:** Slightly sloped terrain.
- Water:** City water in area, not guaranteed to the site.
- Improvements:** No specific improvements. City Water and City sewer in area but is not guaranteed to the site.
- Price:** **\$15,500 per acre.**
- Comments:** One of the few remaining large tracts still available on the By Pass within the city limits of Rockport. Choice tract with 1568± ft. of Hwy 35 frontage. See survey and plat for size details.



Evtex Companies
1806 Harbor Drive
Rockport, TX 78382

Contact Broker For More Information:

Janae Evans
361-790-6030
Janae@evtex.com

20 ± Acres
Hwy 35 By Pass Frontage
Hwy 35 By Pass Between
Pearl and W. Market St.
Rockport, Texas